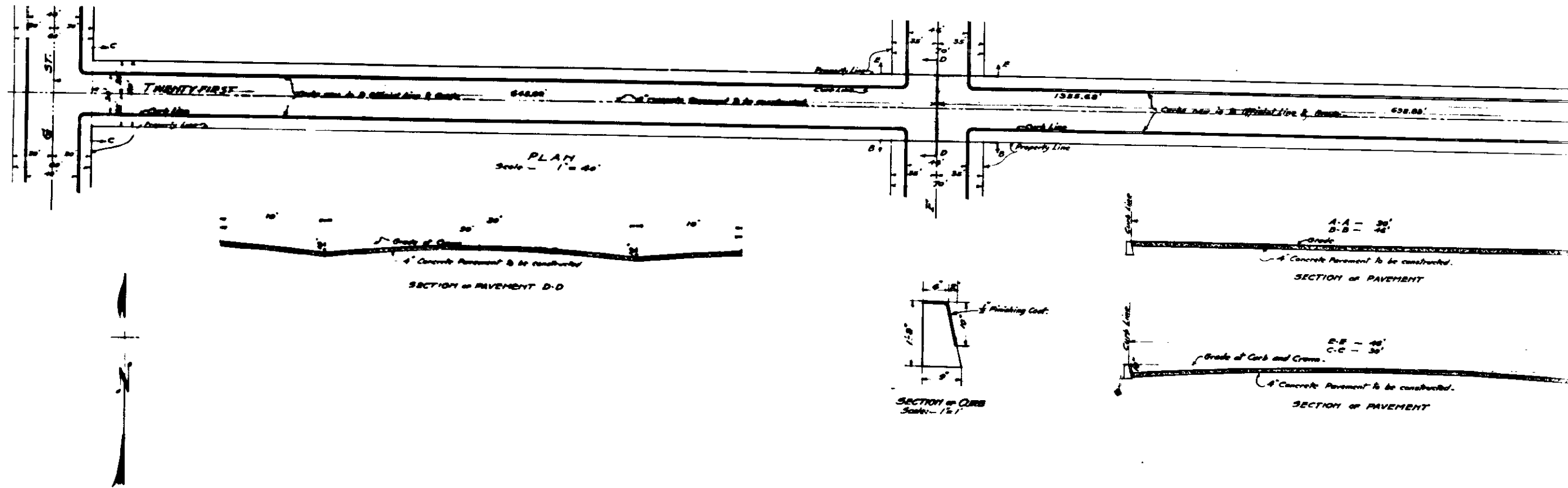


PLAN NO 641  
 FOR IMPROVEMENT OF  
**TWENTY FIRST STREET**  
 BETWEEN  
**E AND G STREETS**  
 IN THE  
 CITY OF SAN BERNARDINO, CALIF.

March 3, 1924. C. E. Johnson  
 City Engineer.

Scale, 1" = 40'

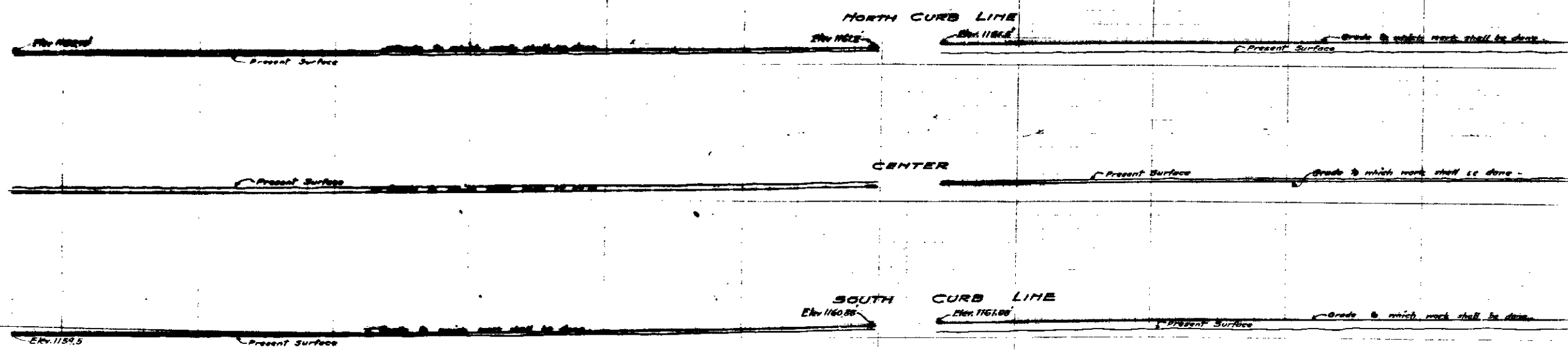
RECEIVED  
 March 11 1924  
 City Engineer's Office



LEGEND  
 " or in means inch or inches.  
 ' or ft. means feet or feet.  
 Elev. means elevation.  
 No. means number.  
 St. means street.

Concrete Pavement to be constructed shown thus: [Red line symbol]  
 Concrete Pavement in section shown thus: [Black line symbol]

All elevations in red ink are in feet and above a plane which is 1045.28 feet below the city bench mark as established by Ordinance 383 of the City of San Bernardino, Calif.



Scale: - Horizontal - 1" = 40'  
 - Vertical - 1" = 4'

PROFILE  
 Red Lines show the grade to which work shall be constructed.  
 Black Lines show Present Surface.